

Quiet running multi-stage centrifugal pumps

Applications

To work with clean water in domestic and industrial applications, irrigation and hydropneumatic sets.

Materials

Pump body and impellers in stainless steel AISI 304.
Diffusers in technopolymer.
Suction and discharge connections in cast iron.
Mechanical seal in graphite and alumine.
Built-in self priming valve.
O-rings in EPDM and NBR.

Aspri 35N:

Motor shaft in stainless steel AISI 420 and steel F-114.

Motor housing in aluminium L-2521.

Aspri 45N:

Motor shaft in stainless steel AISI 420.

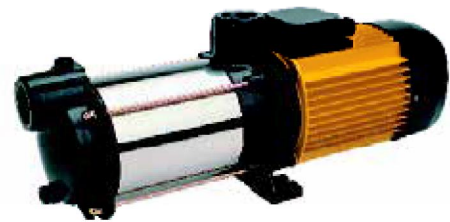
Motor housing in aluminium L-2521.

Motor

Asynchronous, two poles.
IP X5 protection.
Class F insulation.
Continuous operation.
Efficiency IE3.

Limitations

Maximum suction lift: 9 m.
Maximum temperature of liquid: 40 °C.



Hydraulic performance table

Model	I [A]			P1 [kW]		P2		c	l/min	20	40	60	80	100	120	140	150	1~230 V (model M)	3~400 V (model T)	
	1~230 V	3~230 V	3~400 V	1~230 V	3~400 V	[kW]	[HP]											[μF]	Code	Code
	m³/h	1.2	2.4	3.6	4.8	6.0	7.2											8.4	9.0	
Aspri 35.3N	6.7	4.5	2.6	1.5	1.5	0.8	1	25	mwc	41	39	36	34	31	27	22	18	00129699	00129696	
Aspri 35.4N	8.4	5.3	3.1	1.8	1.8	1.1	1.5	25		54	51	48	44	39	33	27	23	00129700	00129697	
Aspri 35.5N	10.2	6.9	4	2.3	2.2	1.5	2	30		68	64	60	55	49	41	34	30	00129701	00129698	
Aspri 35.6N		8.3	4.8		2.7	2.2	3			81	78	74	67	60	52	42	37		00130368	

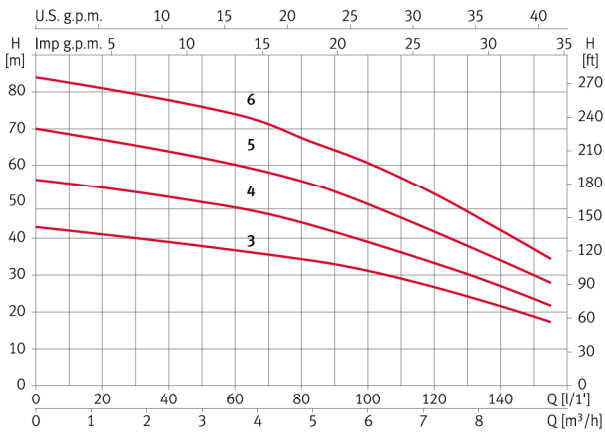
Model	I [A]			P1 [kW]		P2		c	l/min	20	40	60	80	100	120	140	150	1~230 V (model M)	3~400 V (model T)	
	1~230 V	3~230 V	3~400 V	1~230 V	3~400 V	[kW]	[HP]											[μF]	Code	Code
	m³/h	1.2	2.4	3.6	4.8	6.0	7.2											8.4	9.0	
Aspri 45.3N	7.9	5.2	3	1.8	1.7	1.1	1.5	25	mwc	37	36	35	33	30	27	18	8	00132087	00132089	
Aspri 45.4N	10	6.9	4	2.2	2.2	1.5	2	30		48	47	45	42	39	36	24	11	00132088	00132090	
Aspri 45.5N		8.6	5		2.8	2.2	3			61	59	56	54	50	45	31	15		00132091	

Aspri 35N/45N Surface Horizontal

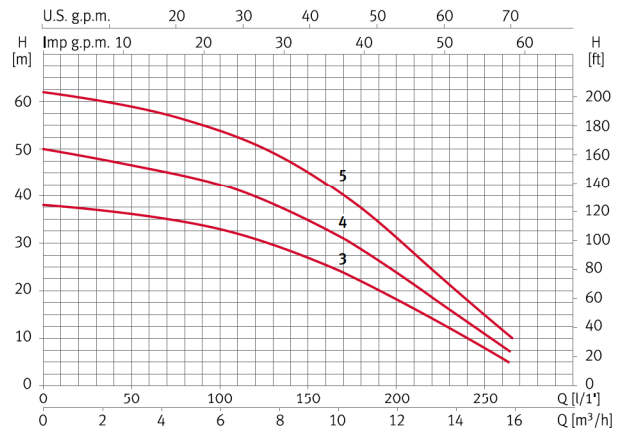


Performance curves at 2900 rpm

Aspri 35N



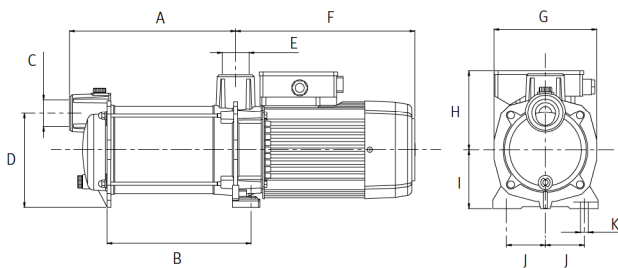
Aspri 45N



Dimensions and weights

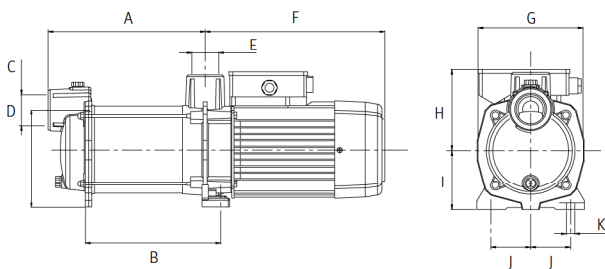
Aspri 35N

Model	A	B	C	D	E	F	G	H	I	J	K	Kg
Aspri 35 3	221.1	187.3	1 1/4"	147	1 1/4"	281.5	158	125.3	90	60	12	18.5/18.2
Aspri 35 4	246.6	211.8	1 1/4"	147	1 1/4"	281.5	158	125.3	90	60	12	20.5/18.6
Aspri 35 5	271.1	236.3	1 1/4"	147	1 1/4"	281.5	158	125.3	90	60	12	23.5/20.6
Aspri 35 6	295.6	260.8	1 1/4"	147	1 1/4"	281.5	158	125.3	90	60	12	23.7



Aspri 45N

Model	A	B	C	D	E	F	G	H	I	J	K	Kg
Aspri 45 3	245.9	211.6	1 1/2"	147	1 1/4"	281.5	158	125.3	90	60	12	22.6/18.6
Aspri 45 4	276.6	242.3	1 1/2"	147	1 1/4"	281.5	158	125.3	90	60	12	23.7/21.2
Aspri 45 5	307.3	273	1 1/2"	147	1 1/4"	281.5	158	125.3	90	60	12	25.3



*Service kits are available on request

WATER SUPPLY SURFACE
HORIZONTAL & VERTICAL